

# Spreadsheet Link™ EX 3

## Use MATLAB® from Microsoft® Excel®

Spreadsheet Link™ EX connects Excel® spreadsheet software with the MATLAB® workspace, enabling you to access the MATLAB environment from an Excel spreadsheet. With Spreadsheet Link EX software, you can exchange data between MATLAB and Excel, taking advantage of the familiar Excel interface while accessing the computational speed and visualization capabilities of MATLAB.

Spreadsheet Link EX is especially useful as an array editor for viewing and editing data interactively in any MATLAB application. Any data that you can import into Excel can be passed to MATLAB for analysis and visualization. The connection between MATLAB and Excel is “live” and requires no intermediate files or low-level, inter-process programming.

### Working with Spreadsheet Link™ EX

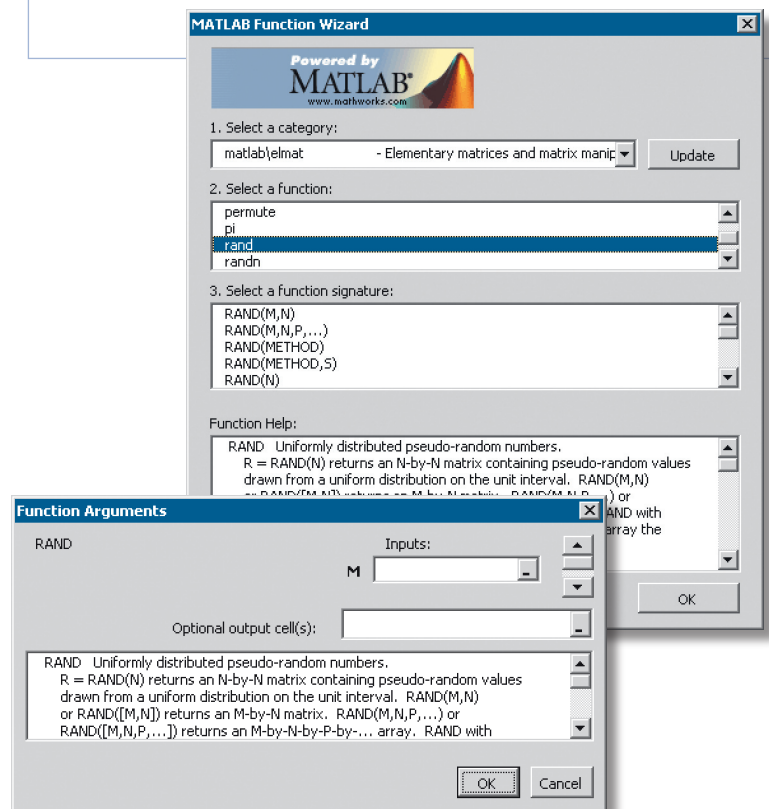
Spreadsheet Link EX features an Excel spreadsheet add-in that provides the functions that connect Excel and MATLAB. The add-in handles interprocess communications between Excel and MATLAB through ActiveX®.

Excel provides a familiar interface that lets you edit and view your data. Spreadsheet Link EX lets you pass data, and commands that operate on it, to MATLAB. Spreadsheet Link EX functions let you:

- Manage the link between the two software environments
- Start MATLAB automatically when you start Excel
- Transfer data between MATLAB and Excel in both directions
- Execute any MATLAB function directly from Excel
- Use the MATLAB Function Wizard to visually navigate the complete list of MATLAB functions, specify input data and run a selected function

### KEY FEATURES

- Data preprocessing, editing, and viewing in the familiar Excel® environment
- Sophisticated analysis of Excel data using MATLAB® and application toolboxes
- Delivery of Excel based applications, using MATLAB as a computational and graphics engine and Excel as an interface
- Interactive selection of available functions using the MATLAB Function Wizard
- Visual interface for customization of all Spreadsheet Link™ EX preferences



The MATLAB® Function Wizard for Spreadsheet Link™ EX. You can browse MATLAB® directories and functions from Excel® and run selected functions from an Excel spreadsheet.

## Managing the Link and Manipulating Your Data

With Spreadsheet Link EX, Microsoft Excel becomes an easy-to-use data-storage and application-development front end for MATLAB. You work with Spreadsheet Link EX functions from an Excel worksheet or macro without leaving the Excel environment. You can use the Excel interface to edit and view your data and then use Spreadsheet Link EX to pass data and commands to MATLAB. You can pass data stored in an Excel spreadsheet to the MATLAB workspace. Similarly, you can easily bring data from the MATLAB workspace into an Excel spreadsheet.

The MATLAB workspace includes all the variables created by MATLAB, Handle Graphics®, and related toolboxes. MATLAB functions can access and share the data in these variables, and you can call these same MATLAB functions from Excel formulas, macros, or Excel Visual Basic® subroutines or functions.

Because both MATLAB and Excel are extensible, you can develop and incorporate your own data analysis functions and techniques.

### Required Products

MATLAB®

### Related Products

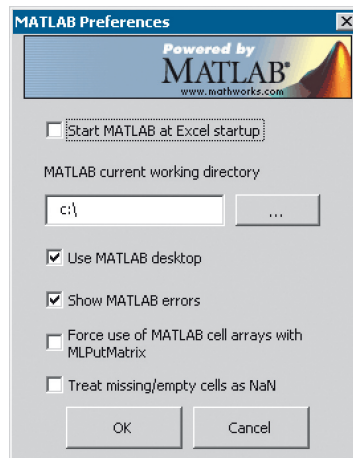
**Database Toolbox™.** Exchange data with relational databases

**Datafeed Toolbox™.** Acquire financial data from data service providers

For more information on related products, visit [www.mathworks.com/products/excellink](http://www.mathworks.com/products/excellink)

### Platform and System Requirements

For platform and system requirements, visit [www.mathworks.com/products/excellink](http://www.mathworks.com/products/excellink) ■



The Preferences dialog, which you can use to interactively configure your environment.

### Resources

#### VISIT

[www.mathworks.com](http://www.mathworks.com)

#### TECHNICAL SUPPORT

[www.mathworks.com/support](http://www.mathworks.com/support)

#### ONLINE USER COMMUNITY

[www.mathworks.com/matlabcentral](http://www.mathworks.com/matlabcentral)

#### DEMOS

[www.mathworks.com/demos](http://www.mathworks.com/demos)

#### TRAINING SERVICES

[www.mathworks.com/training](http://www.mathworks.com/training)

#### THIRD-PARTY PRODUCTS AND SERVICES

[www.mathworks.com/connections](http://www.mathworks.com/connections)

#### WORLDWIDE CONTACTS

[www.mathworks.com/contact](http://www.mathworks.com/contact)

#### E-MAIL

[info@mathworks.com](mailto:info@mathworks.com)